

Iwakura City

April 2023 Saved version

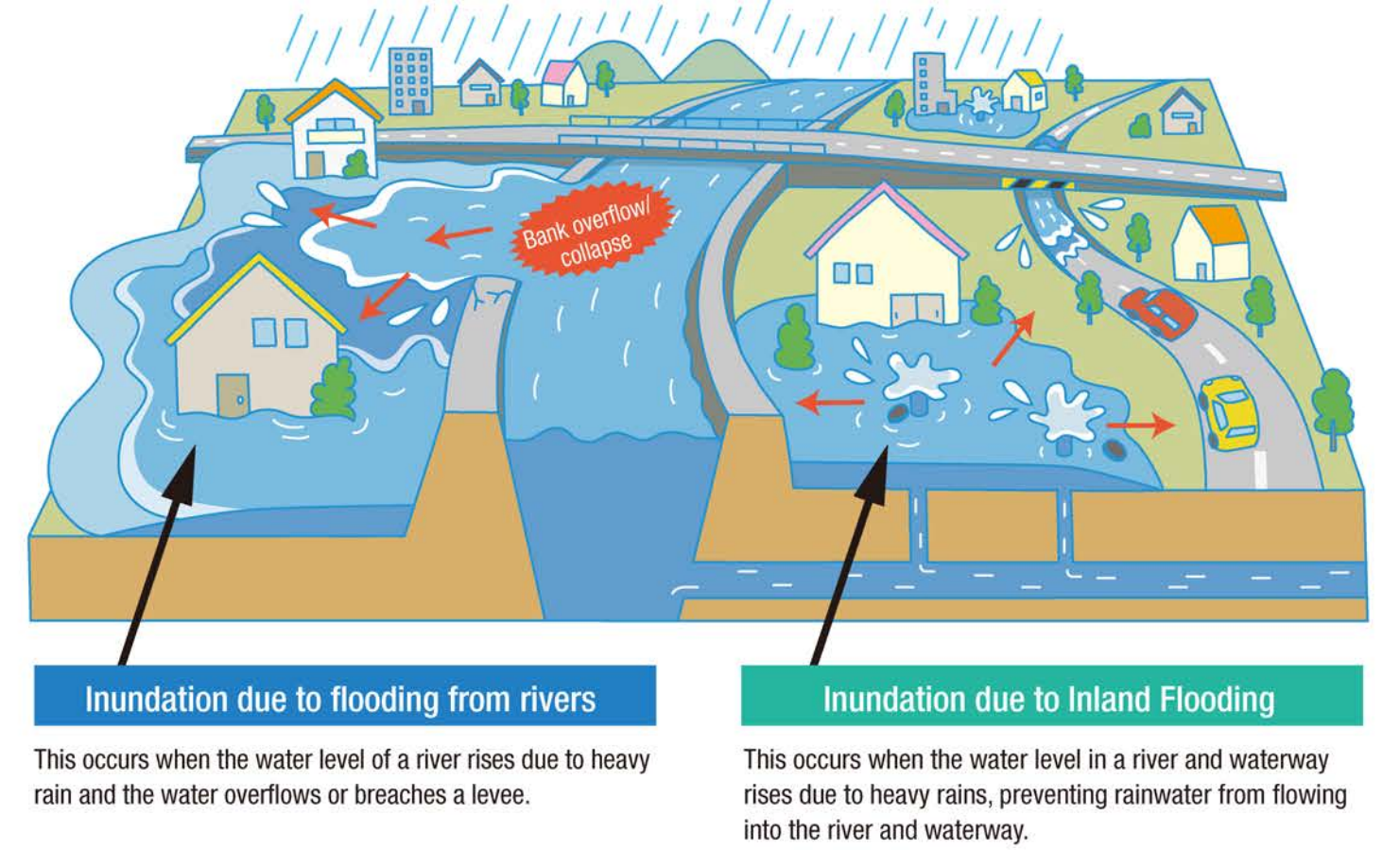
Inland Flooding Hazard Map

The Inland Flooding Hazard Map indicates flood areas and inundation depths in the city that are expected from localized heavy rains, etc. that are beyond the drainage capacity of the sewage systems.

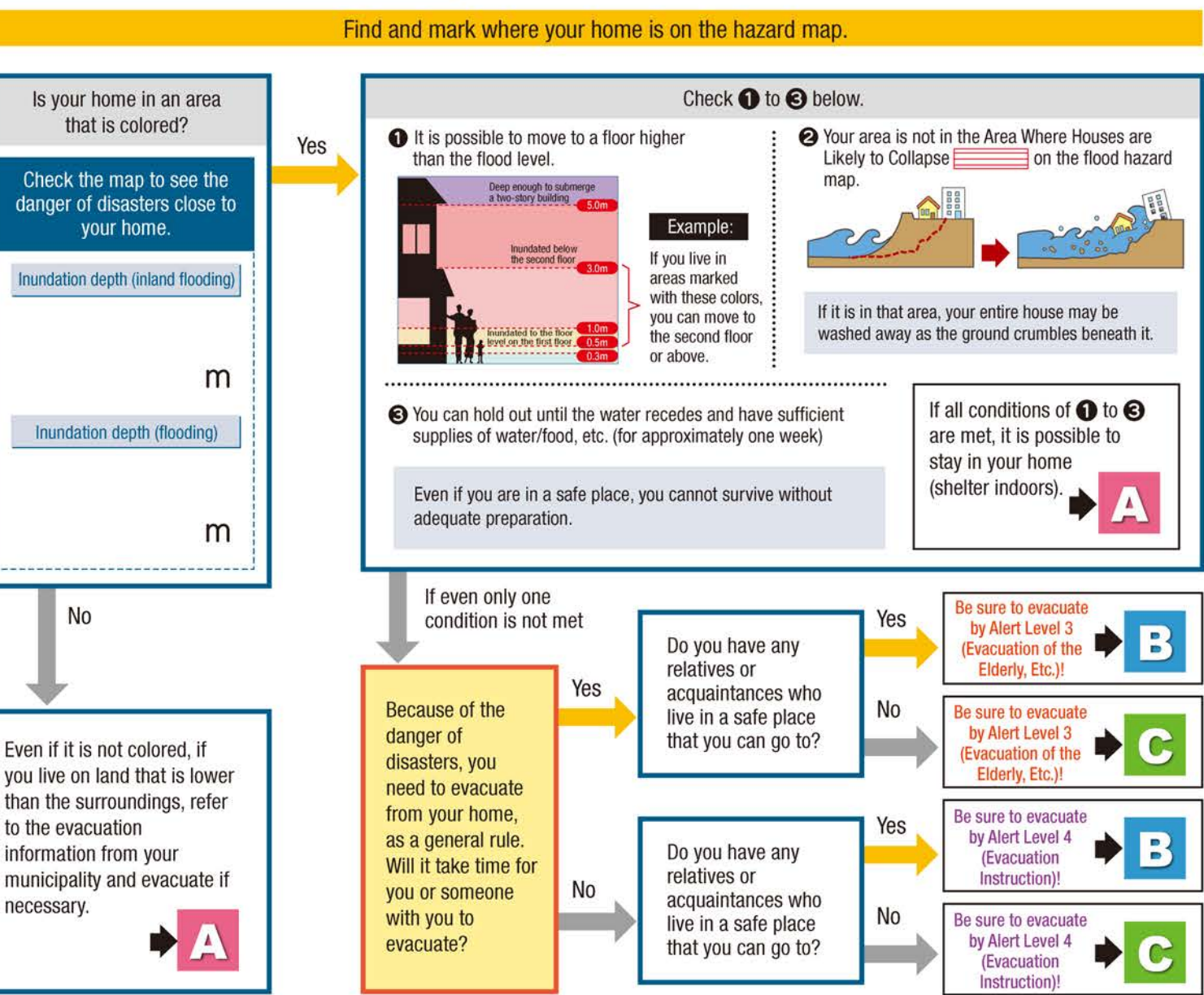
The expected flood areas and degree of inundation may vary depending on how hard it rains, changes in the shape of the land, river and sewage systems, etc. As roadside ditches are not taken into consideration, actual flooding conditions may differ from those on this map.

Regarding the rivers that flow around the city, refer to the opposite side for floods that occur when the water level rises above the levee or when a part of the levee is breached.

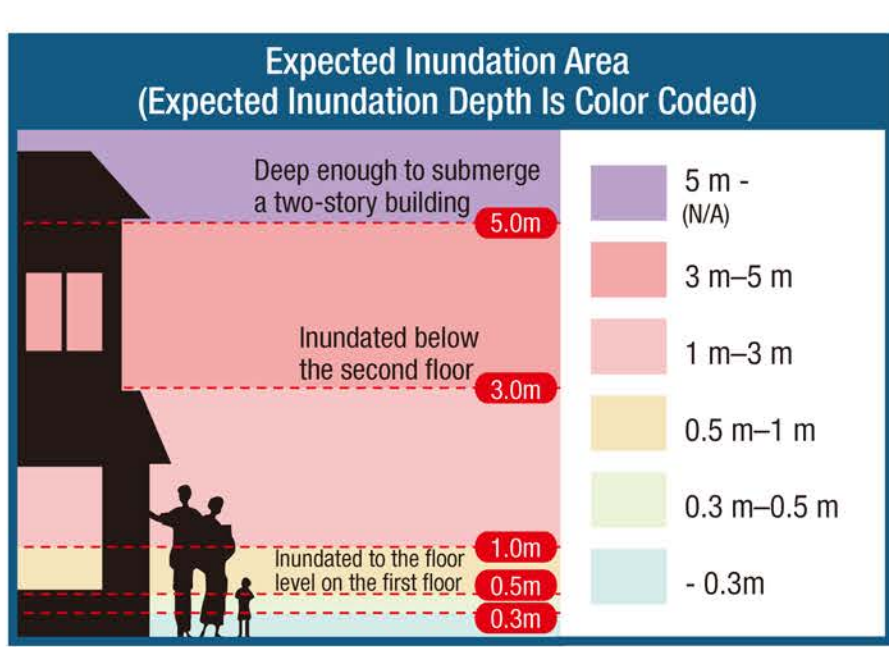
Differences between Flooding from Rivers and Inland Flooding



Evacuation Actions Judgment Flow



Based on the results of the evacuation actions judgment flow above, decide in advance what actions you and your family will take.		
Evacuation actions judgment flow result		Actions you must perform
A	Shelter indoors	If your area is not a high risk of flooding area or if there is a risk of flooding but you can avoid danger by meeting the conditions of ① to ③, you can stay at home safely. <ul style="list-style-type: none">Move to the upper floors of a sturdy and safe building.Move to the upper floors of nearby apartments or buildings that can ensure your safety.
B	Evacuate to the home of a relative or acquaintance who lives in a safe area	Talk to them in advance about evacuating during a disaster. Also, use a hazard map in advance to check whether the homes of relatives and acquaintances and the evacuation route to them are safe. <ul style="list-style-type: none">Check items that you should take to the evacuation destination.Check if the evacuation route and destination are safe.If the evacuation destination is far away, start evacuating early.Check your means of transportation: walking, driving, or public transportation (train or bus)
Where to evacuate to		Time required to evacuate
How to evacuate		minutes
C	Evacuating to an evacuation facility in a safe area	Use a hazard map to determine the route to a facility you can evacuate to, and check whether that route is safe in advance. Also, carry items with you that can prevent infectious diseases. <ul style="list-style-type: none">Check items that you should take to the evacuation destination.Take measures against infectious diseases.Check if the evacuation route and destination are safe.
Where to evacuate to		Time required to evacuate
How to evacuate		minutes
Evacuate to a hotel, inn, etc. in a safe area		Normal accommodation charges will apply. Try to make a reservation and/or check availability in advance. Also, check the hazard map in advance to see if the hotel or inn and the evacuation route are safe. Also, carry items with you that can prevent infectious diseases. <ul style="list-style-type: none">Make a reservation and/or check availability in advance.Check items that you should take to the evacuation destination.Take measures against infectious diseases.Check if the evacuation route and destination are safe.If the evacuation destination is far away, start evacuating early.



Blackout Information Service by Chubu Electric Power Grid

You can check where power outages are occurring at a glance using your smartphone. A smartphone app is required to use the power outage information service. You can download it from the QR code on the right.

You can download it from the App Store

You can download it from the Google play

Designated emergency evacuation sites (flooding from rivers and inland flooding)

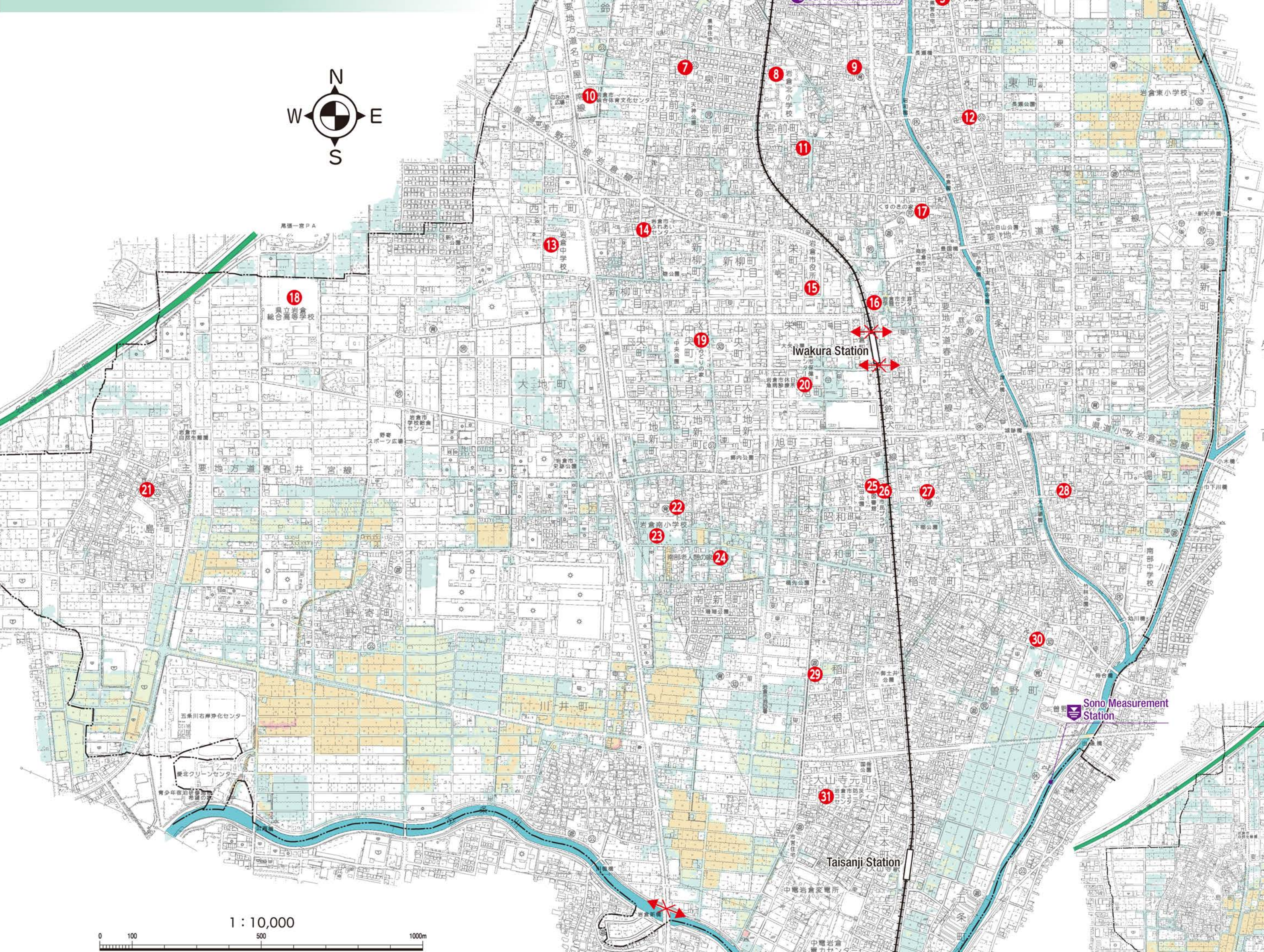
Underpasses

Note: Underpasses, such as underground passages and lowered sections of roads, are dangerous because they are prone to flooding.

Expected Inland Flooding Inundation Area Map (Expected Size)

Considering the state of development of sewer pipes in Iwakura City, we simulated* inland flooding due to heavy rain (63 mm per hour) that occurs approximately once every 10 years in the Iwakura City area. The results are displayed on this map.

*The simulation includes sewerage facilities scheduled to be completed in FY2023



How to Get Information about Disaster Prevention and the Weather

The table below shows how citizens can get information in the event of a flood threat. In the case of heavy rain, pay attention to this information and try to evacuate early.

Source of information	URLs
Japan Meteorological Agency	https://www.jma.go.jp/jma/
Disaster Information for Rivers from the Ministry of Land, Infrastructure, Transport and Tourism	https://www.river.go.jp/
River disaster management information released by Aichi prefectural government	https://www.kasen-aichi.jp/
Iwakura City	https://www.city.iwakura.aichi.jp/

Iwakura City Relief Information Email

Send an email to t-iwakura@sg-m.jp. (The subject and text can be left blank.)

If you have a smartphone with the barcode reader function, you can use this QR code. This email can also be used for confirming your safety, so be sure to register. Registration is free.

Meitetsu Inuyama Line

NTT Disaster Emergency Message Dial

How to Record Messages 171 → 1 → (0000) 00-0000

How to Play Back Messages 171 → 2 → (0000) 00-0000

Note: You can use the Disaster Emergency Message Dial from fixed-line phones, public phones, push-button Hikari phones, and disaster emergency public phones installed by NTT at evacuation shelters in the event of a disaster. For use from cell phones or phones of other telecommunications carriers, contact your telecommunications carrier. https://www.ntt-east.co.jp/saigai/qe_voice171/rv_01.html

Types of Evacuation Information and Actions to Be Taken

There are five types of evacuation information, depending on the degree of urgency. Check what the differences are.

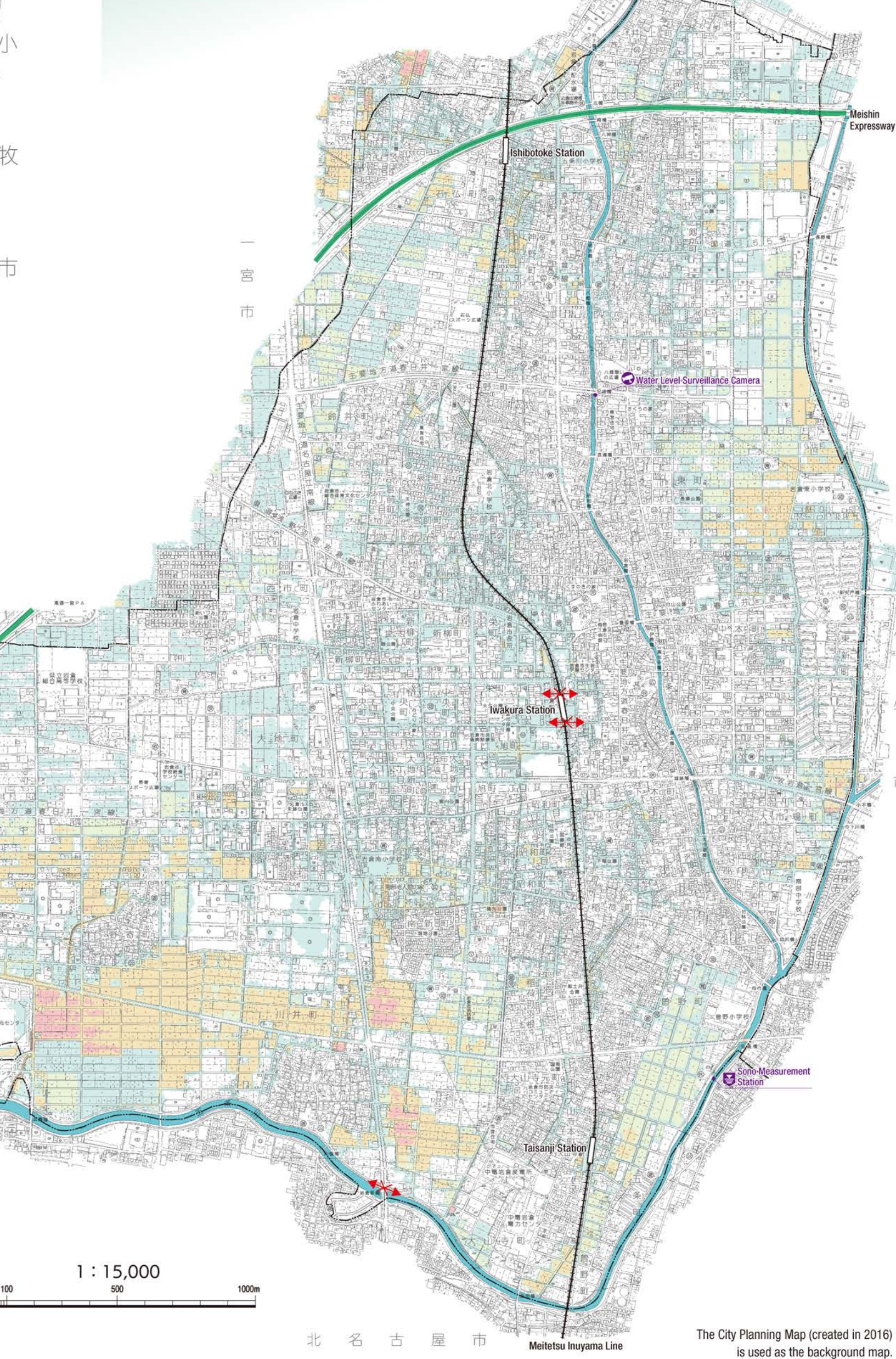
Alert level 1 (issued by the JMA) Possibility of warnings	Alert level 2 (issued by the JMA) Heavy Rain or Flood Advisories	Alert level 3 (issued by the mayor) Evacuation of the Elderly, Etc.	Alert level 4 (issued by the mayor) Evacuation instructions	Alert level 5 (issued by the mayor) Emergency Safety Measures
Conditions to be issued Risk of weather worsening	Conditions to be issued Weather worsening	Conditions to be issued Risk of disaster	Conditions to be issued High risk of disaster	Conditions to be issued Disaster occurring/impending (This information will not always be issued)
Actions to be taken by citizens Be on higher alert for disasters	Actions to be taken by citizens Check your own evacuation procedures Using hazard maps, etc., reconfirm the disaster risk of your home and facilities, evacuation sites, evacuation routes, the timing of evacuation, etc. At the same time, reconfirm how to obtain evacuation information and actions you need to perform when preparing to evacuate.	Actions to be taken by citizens Elderly people should evacuate from dangerous places Elderly people* should evacuate from dangerous places (evacuate or ensure their safety indoors) If necessary, people other than the elderly should refrain from going out, such as going to work, and stop their usual activities and prepare for evacuation or evacuate voluntarily.	Actions to be taken by citizens All citizens should evacuate from dangerous places (evacuate or ensure their safety indoors)	Actions to be taken by citizens Danger to life Protect yourself immediately As it is highly probable that some kind of disaster has already occurred and your life is in danger, secure your own safety immediately. However, if it is dangerous to evacuate to the planned evacuation site, secure your own safety, such as moving to the upper floor of your home.

*Elderly people and people with disabilities who need time to evacuate and those who help them evacuate

Expected Inland Flooding Inundation Area Map (Expected Maximum Area)

Considering the state of development of sewer pipes in Iwakura City, we simulated* inland flooding from the maximum possible rainfall (147 mm per hour) in the Iwakura City area. The results are displayed on this map.

*The simulation includes sewerage facilities scheduled to be completed in FY2023



The City Planning Map (created in 2016) is used as the background map.